



# Corporate Volunteer Sponsorship Package

## Building a Safer and More Supportive Community

As part of our ongoing efforts to create a safer and more supportive community, we propose a series of corporate projects to achieve multiple objectives: volunteer team building, raising awareness, and engaging corporate groups for sustained financial support.



yellowbrickhouse.org • Crisis & Support Line: 1-800-263-3247  
Office: 905-709-0900 • Charitable Reg: 11910 5187 RR0001  
52 West Beaver Creek Rd, Unit 4, Richmond Hill, ON L4B 1L9

# Contents



**03. ABOUT YELLOW BRICK HOUSE**

---

**04. VOLUNTEER TEAM BUILDING OPPORTUNITIES**

---

**05. CORPORATE VOLUNTEER BENEFITS**

---

**06. THE NEED FOR FINANCIAL SUPPORT**

---

**07. SHELTER MEALS – SPONSORSHIP OPPORTUNITIES**

---

**08. IN-PERSON GROUP VOLUNTEER PROJECTS**

---

**09. OTHER WAYS TO GET INVOLVED**

---

**10. JOIN US IN MAKING A DIFFERENCE**

# About Yellow Brick House

Since 1978 Yellow Brick House has provided life saving services and prevention programs to survivors of domestic violence. For 48 years, we have provided lifesaving services and prevention programs to survivors of domestic violence with a safe and secure place to rebuild their lives. Our services impact the larger community by accommodating those who are victims of violence, addressing systemic issues women experience in the face of violence, and providing a sense of community and support for survivors.



## **Vision**

Freedom from violence.  
Equality for all.



## **Mission**

Yellow Brick House provides life-saving services and prevention programs to meet the diverse needs of individuals, families, and communities impacted by violence.



# Volunteer Team Building Opportunities



## Awareness Campaigns

Educate corporate teams and the wider community about the prevalence and impact of domestic violence.



## Partnership Development

Establish partnerships with corporations to actively support our mission through financial contributions, sponsorships, and in-kind donations.



## Tailored Corporate Involvement

Host workplace giving campaigns, organize fundraising events or participate in cause-related marketing initiatives tailored to corporate interests and goals.



# Corporate Volunteer Benefits



## Employee Satisfaction and Retention

Enhance team morale and foster a sense of purpose among employees.



## Brand Visibility and Reputation

Demonstrate corporate commitment to social responsibility and community impact.



## Community Impact which Aligns with Corporate Social Responsibility

Directly support individuals and families in need, contributing to long-term positive change.



## Financial Sustainability for Yellow Brick House

Ensure the continuity of essential programs and services through generous contributions.

“It has been inspiring to see the Yellow Brick House and the CGI team unite with a shared commitment to making a meaningful difference. Together, we are committed to expanding our efforts, reaching more individuals in need, and creating sustainable change that transcends generations. Thank you, Yellow Brick House, for all that you do to save lives!” – CGI Inc.



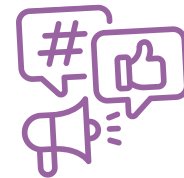
# The Need for Financial Support

While we deeply value corporate groups' willingness to contribute their time and energy, the identified projects are beyond our operational budget. To ensure successful execution and long-term sustainability, we request a financial donation from participating corporate groups. This contribution will:

- Fund the specific volunteer projects listed on the pages below.
- Enable us to allocate resources efficiently.
- Create a lasting and meaningful impact.

In appreciation of your generous financial support, we will recognize your organization's contributions through:

- Project recognition on our social media platforms.
- Showcasing your dedication to corporate social responsibility to our engaged audience.



# Shelter Meals – Sponsorship Opportunities:

Sponsorship for each opportunity is \$2,000.

Family Day (Feb 16th)

Good Friday (Apr 3rd)

Easter Sunday (Apr 5th)

Victoria Day (May 18th)

Canada Day (July 1st)

Civic Holiday (Aug 3rd)

Labour Day (Sep 7th)

Thanksgiving (Oct 12th)

Christmas Day (Dec 25th)

Boxing Day (Dec 26th)

New Year's Eve (Dec 31st)

New Year's Day (Jan 1st)



**Impact:** Funds will provide catered meals for 41 families residing in our shelters, allowing shelter cooks to spend time with their loved ones. Catered meals ensure cultural diversity and contribute to creating a festive atmosphere with decorations, music, and gifts. Surplus funds may support housing programs, counseling, or case management.

# In-person Group Volunteer Projects:

For a full list of available projects or for more information, please contact us at [supporter@yellowbrickhouse.org](mailto:supporter@yellowbrickhouse.org).

Timeline	Availability	Amount
<b>Q1</b> January - March	Opportunities available: <u>4</u>	\$2,000 per project
<b>Q2</b> April - June	Opportunities available: <u>7</u>	\$2,000 per project
<b>Q3</b> July - September	Opportunities available: <u>7</u>	\$2,000 per project + a \$5,000 project
<b>Q4</b> October - December	Opportunities available: <u>9</u>	\$2,000 per project



# Thank You Corporate Sponsors



Wealth  
Management

**HONDA**

**opentext™**



**GRAINGER**



**CGI**

**BGIS**

**Marsh**



# Other Ways to Get Involved



## Match Employee Donations

*Inspire generosity among your team by offering to match employee donations.*

Double the impact of their contributions and show your company's commitment to making a difference.



## Host a Fundraising Campaign

*Turn your next corporate event into an opportunity to give back. Whether it's an annual gathering, team celebration, or milestone achievement, engage your employees in fundraising for a cause. Every contribution brings us closer to helping families in crisis. [Start your fundraising journey here!](#)*



## Sponsor a Shelter Bed

*Yellow Brick House operates two shelters with 41 beds and 10 cribs, providing life-saving refuge for women and children fleeing domestic violence. Your sponsorship helps us raise the funds needed to provide free, confidential, and essential services that support survivors as they rebuild their lives.*

*Every \$300 provides one night of safety at Yellow Brick House shelters for a woman and her child fleeing domestic violence and abuse.*

[Click here to learn more about our shelter campaign.](#)



# Join Us in Making a Difference

We invite your organization to partner with us in creating meaningful change. By sponsoring and participating in these projects, your team will make a direct and lasting impact on the lives of individuals and families in our community. Together, we can build a brighter, safer future for all.

## Contact

Phone (905) 709-0900 ext 2255  
Website [www.yellowbrickhouse.org](http://www.yellowbrickhouse.org)  
Email [supporter@yellowbrickhouse.org](mailto:supporter@yellowbrickhouse.org)  
Address 52 West Beaver Creek Rd #4, Richmond Hill, ON L4B 1L9  
Charitable Reg 119105187RR0001

